

MODEL # 6850-SC HEAVY DUTY SHEAR CUT KNIFE (SPECIAL ADJUSTMENTS)



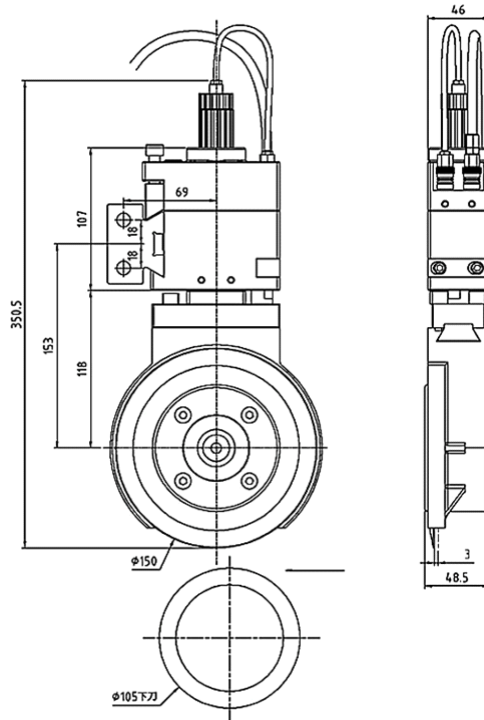
BURRIS MACHINE COMPANY INC.

Phone: 828-322-6914 / Fax: 828-324-2793

Website: burrismachineco.com



Knife Holder Dimension Drawing



6850-SC – Heavy-Duty Shear Cut Knife

This modular design, with its strong, rigid knife holder, provides the added benefit of reduced vibration at high speed, producing predictable shear cuts at up to 4,900 feet per minute. It is the best choice for shearing heavy material, or for slitting at high speeds.

The **6850-SC** also has unique options for multiple adjustments. With a built-in pinion, it has the ability to be precisely adjusted when used with a dovetail and gear rack combination. It is designed for safe, easy separation of the bottom blade cartridge. This allows quick blade changes without disturbing the shear cut settings or the position on the dovetail bar.

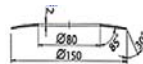
It also allows reversal for left or right side bottom-knife cuts & reverse web feed direction. It has additional features, such as simplified cant angle adjustment (front and back, for forward or reverse web flow), depth and position adjustments, and robust down-stroke and side contact force.

It is used in a wide range of heavy-duty slitting applications.

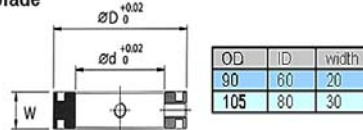
Main specification	
Knifeholder width	48.5mm(1.909")
Blade diameter	150mm(5.905")
Net weight	5.6kg(12.33lb)
Min slit. Width	50mm(1.968")
Available stroke	25mm(0.984")
Cant angle	+/- 1.68 degree
Side contact stroke	3mm(0.118")
Slitting speed	1500RPM(4900FPM)
Air pressure range	3~6kg/cm ² (42~85psi)
Down stroke force	50 kgf @ 6kg/cm ²
Side contact force	60 kgf @ 6kg/cm ²

Blade Dimensions

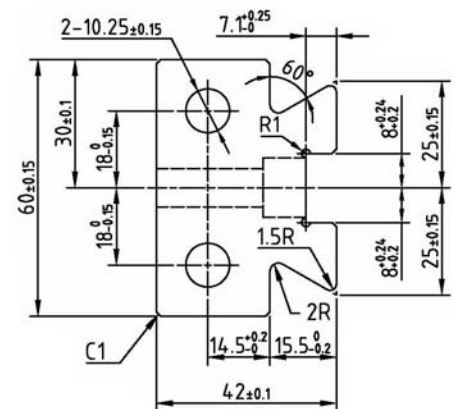
★ Top blade



★ Bottom blade



Dovetail Dimensions 6003-GB



Easy Change Cant Angle

New Design, saves time!!!

