

MODEL # 6425-SC NARROW SHEAR CUT KNIFE

SHEAR CUTTING

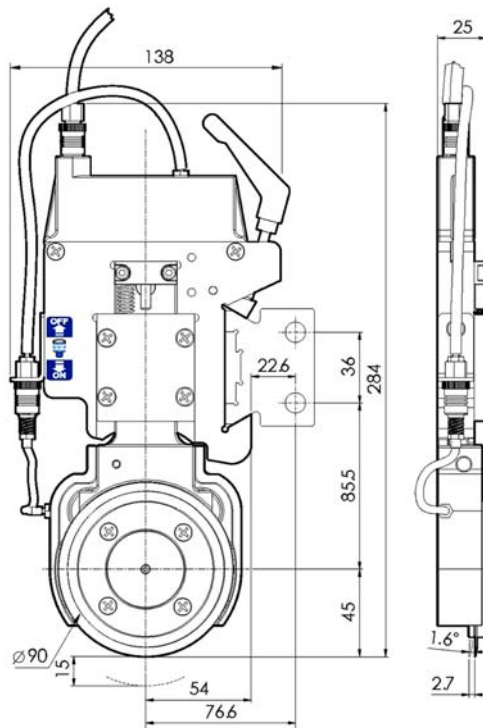
BURRIS MACHINE COMPANY INC.

Phone: 828-322-6914 / Fax: 828-324-2793

Website: burrismachineco.com



Knife Holder Dimension Drawing



6425-SC – Narrow Shear Cut Knife

The compact, thin design allows cuts as narrow as one inch (25.4mm) at up to 1,300 feet per minute. The 6425-SC is ideal for shearing light paper, foil, films and woven or non-woven fabrics. The smooth, twin air control valve operation provides automatic blade overlap and side closure, thus reducing set-up time and increasing the lifetime of the blade.

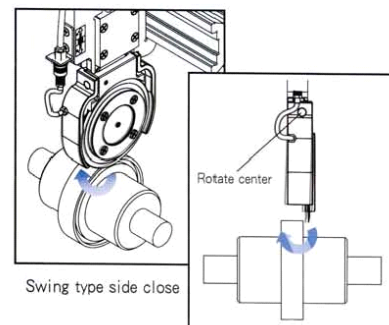
The spring-loaded clamp pawl allows for ease in mounting and positioning the knife holder. This knife-holder can be ordered for either left or right cut.

The 6425-SC is generally used for slitting thickness of 0.3mm, or less, thin film

Main specification

Min. slit width	25.4mm (1")
Available stroke	15mm
Contact stroke	2.7mm
Max. slit speed	400M/min
Air pressure range	2~6kg/cm ²
Blade material	SKH-9

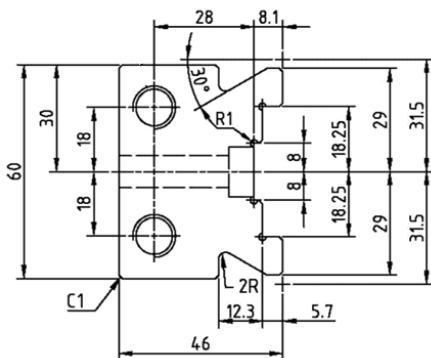
★ Swing type side contact



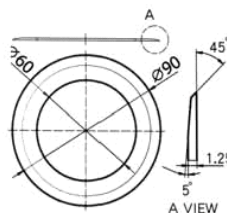
Blade Dimensions

OD	ID	width
90	60	20
105	80	30

Dovetail Dimensions 6004-GB



★ Top blade



★ Bottom blade

